

# SMAIL BAYALIYEV

Born on 17.07.1952, the village of Iskander, South Kazakhstan region (now it is the territory of Uzbekistan) Graduated from the Tashkent Art College named after P. Benkov (1974-77). A member of the Union of Artist of the Republic of Kazakhstan. A corresponding member of the Academy of Arts of the Republic of Kazakhstan. Lives and work in Shymkent, Kazakhstan

## MAIN EXHIBITIONS

- 2015** Central Asian contemporary art exhibition "TOPOGRAFICA", Bishkek, Kyrgyzstan.
- 2015** International Festival of Art Design and Architecture «ASTANA ART FEST 2015», Astana, Kazakhstan
- 2014** « Life is a legend». Move. Museum of Modern and Contemporary Art. Strasbourg.
- 2014** The International festival of Contemporary Art "Art BatFest", Almaty, Kazakhstan
- 2013** The 7-th Tashkent International Biennale of Contemporary Art "Different cultures - one world", Tashkent, Uzbekistan
- 2013** The International festival "White night in Perm", Perm, Russia
- 2012** The exhibition of contemporary art "Art-Dala", Astana, Kazakhstan
- 2011, 2012** The International festival of Contemporary Art "Art BatFest", Almaty, Kazakhstan
- 2005** The exhibition "La Sindrome di Tamerlano", Orvieto, Italy
- 2004** The gallery "Canaia Gallery", Move. Mexico City, Mexico
- 2003** The International exhibition "Autobus 7,4 x 4,4", Slovenia
- 2002** No mads land. House of World Cultures, Berlin, Germany
- 2002** Trans Forma. Move. Contemporary Art Center, Geneva, Switzerland
- 2002** Eurasian syndrome. Karaganda (Kazakhstan), Nizhny Tagil, Ekaterinburg (Russia)
- 2001** 10 years to "Kyzyl Traktor", International Academy of Business, Almaty, Kazakhstan
- 2000** Transzedens. Kunsthalle, Wien, Austria
- 2000** International Festival of Arts "Master Class - Kazakhstan", Almaty, Kazakhstan
- 2000** The Second Annual Exhibition of the SCCA "Self-identification: experience of interaction", exhibition complex "Atakent", Almaty, Kazakhstan
- 1999** Letter to Tengri. Contemporary Art Center, Vilnius, Lithuania
- 1998** The 4-th International. State Museum of Arts named after A. Kasteev, Almaty, Kazakhstan
- 1998** The First Annual Exhibition of the SCCA "Self-identification: futuristic Forecasts". Store "Moscow", Almaty, Kazakhstan
- 1997** The 2-nd Tashkent International Biennale "Asia Art". Central Exhibition Hall, Tashkent, Uzbekistan
- 1997** Parade of the Galleries. "Zone of art". State Museum of the Arts named after A. Kasteev. Almaty, Kazakhstan
- 1995** The artists of Shymkent. Transavantgarde. State Museum of the Arts named after A. Kasteev. Almaty, Kazakhstan
- 1993** SaA. Central House of Artist, Moscow, Russia
- 1991** The solo exhibition in the gallery "Bal-Bal", Shymkent, Kazakhstan
- 1990** Shymkent - Transavantgarde. Hall "Cathedral church", Almaty, Kazakhstan

## Awards

- 2013** "For original art solutions in the product" The 7-th Tashkent International Biennale of Contemporary Art "Different cultures - one world", Tashkent, Uzbekistan
- 2000** Laureate of International Festival of Arts "Master-Class-Kazakhstan"
- 1999** The best artist of the year of the South-Kazakhstan, Shymkent, Kazakhstan
- 1997** "For deep connection cultural traditions of Asia and the innovative ideas of modern art" International Exhibition "Asia Art» Tashkent, Uzbekistan.



“The Door Way”(Galoshes) Metal, металл, fabric, wax. length 200cm. 2015.



“Contact”. Metal, fabric. Length 600cm. 2015



“Clouds” Metal, synthetic net. Hight 220 cm. 2015



Performance at Shymkent Lead Refinery Waste Site. Photo 70x105cm. 2014



“A Pilgrim”. Video 04.50 seconds. 2014



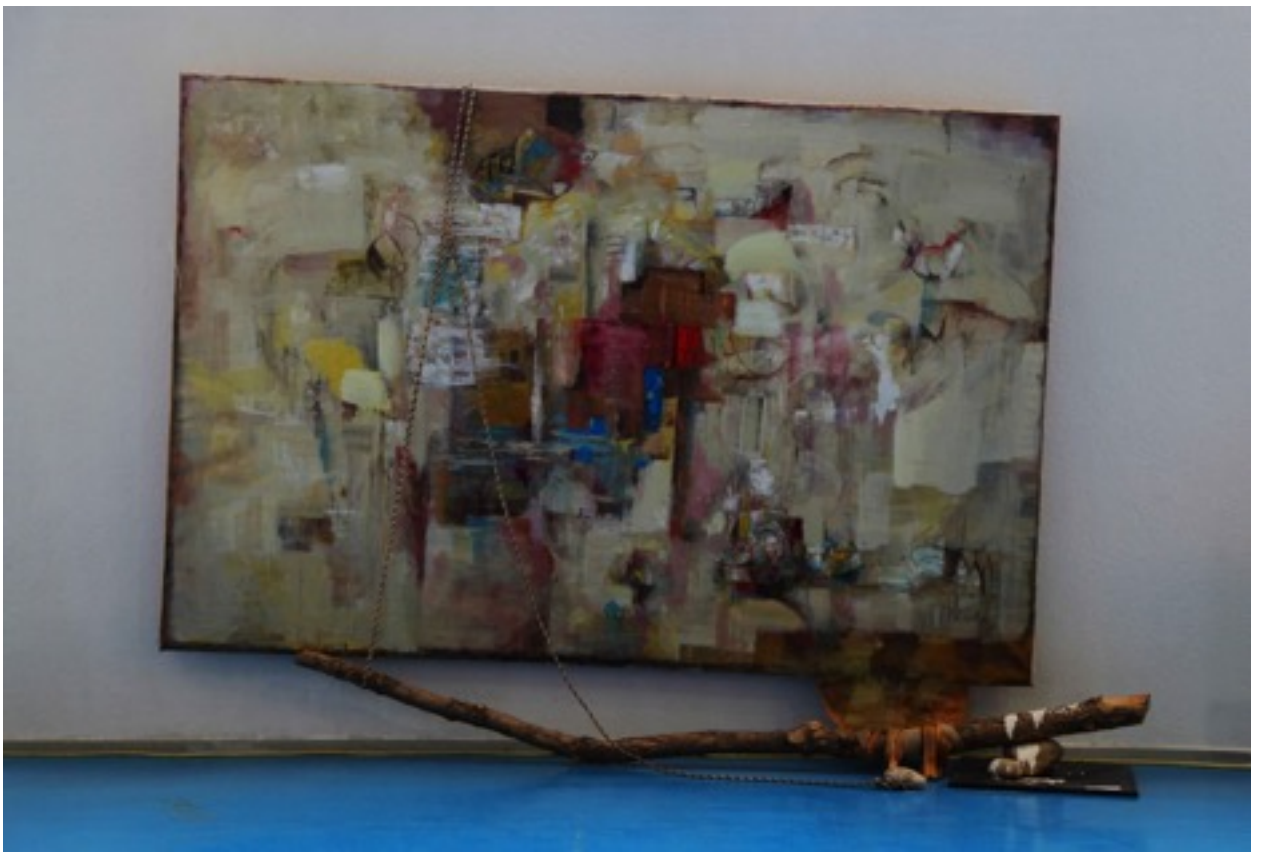
"Turkestan". Oil and feathers on Canvas. 70x100 cm. 2012



"Semipalatinsk Nuclear Test Site". Felt, metal. Length 700 cm. 2012



"Horse Herd 02". Felt, metal. 600 cm. 2013



“A Shepherd”. Oil, wood, fabric, canvas 200x300cm. 2012



“A Shepherd 02”. Performance 2012





“A Horse Herd”. Felt, Metal. 2012



“Ayt” Performance. 2012



"Blue Steppe" Acrylic on Canvas 70x100 cm. 2013



"Shaman's Interior Design". Clay, nails, acrylic on canvas. 60x60 cm. 2013



“A Nomad”. Felt, Metal, Gypsum. Length 500 cm. 2011



“A Heaven Shepherd” Oil on canvas. 100x100 cm. 2013



“Betpakdala”. Oil on canvas. 70x90cm. 2014

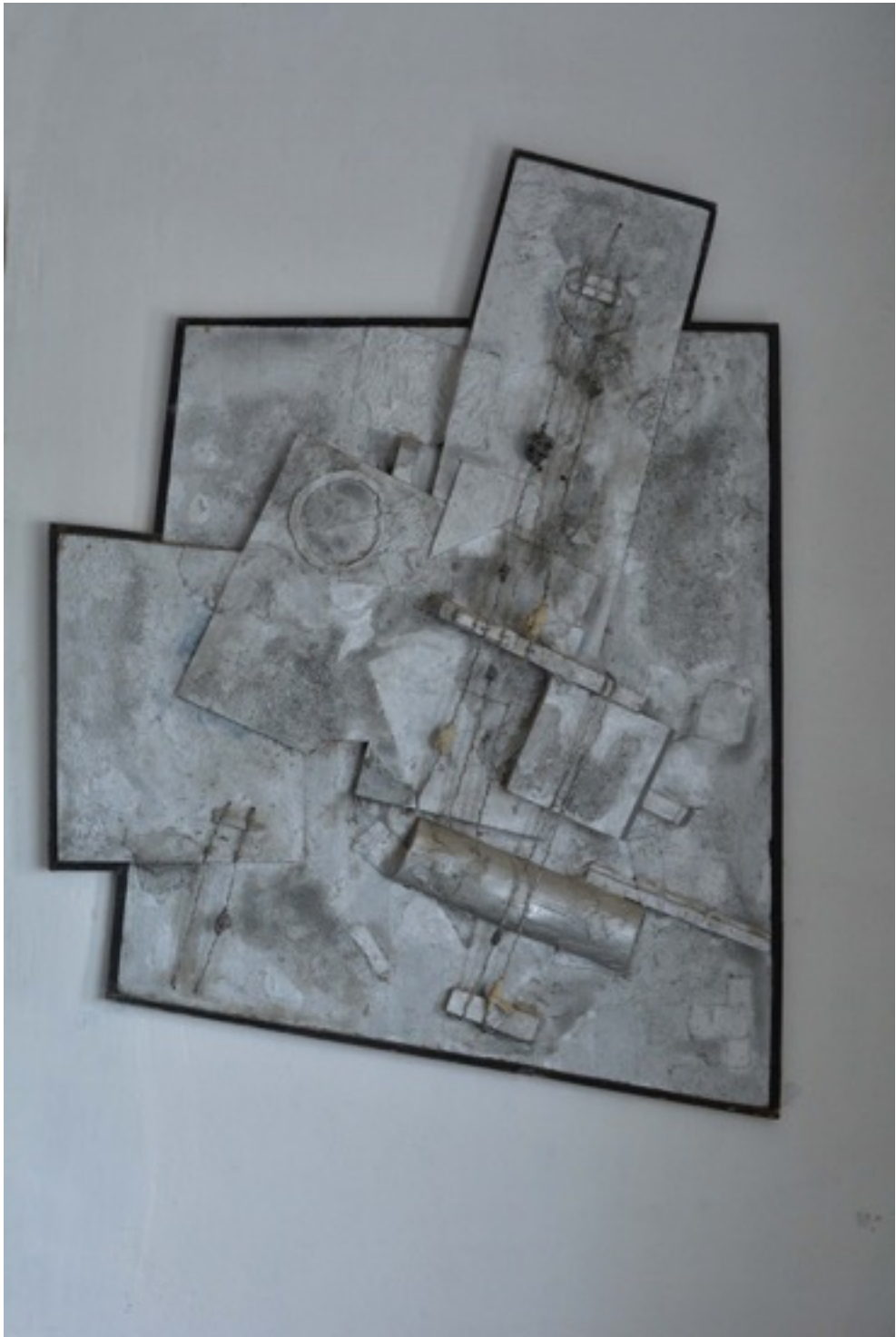


"A Shaman's Masque". Acrylic, wood, metal on canvas. 80x110 cm 2014



"Time chain". Felt, metal, fabric. 4x3m. 1998





"Neoconstructivism-01" Oil, wood, metal on canvas. 80x100 cm. 1996



"Neoconstructivism-01". Oil, wood, metal on canvas. 1995